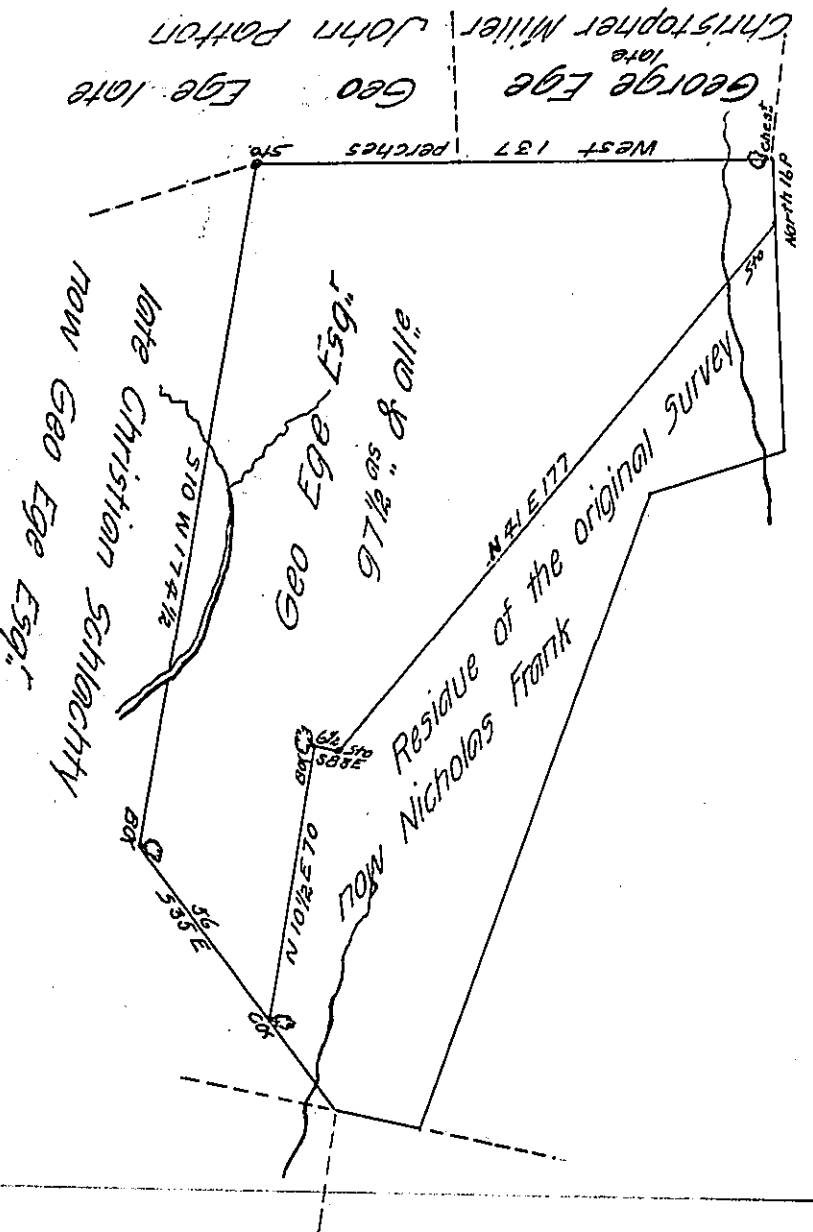


Page - 212



82-3-28

Page - 213

Situate in Heidelberg township Berks (formerly Lancaster) County containing ninety seven acres and a half and allowance of 6 P. Ct. part of A^s 151 1/2 & allowance &c Surveyed on a warrant dated the fifth day of December A. Dom. 1751 granted to Christian Sweitzer the above part surveyed Oct^r 8th 1789 by Henry Vanderslice a Deputy Surveyor of Berks County as appears from his draft remaining filed in my office

John Taylor Esquire }
 Surveyor General }

February 9th 1837

Matthias S Richards

D. S.

IN TESTIMONY that the above is a copy of the original remaining on file in the Department of Internal Affairs of Pennsylvania, made conformably to an Act of Assembly approved the 16th day of February, 1833, I have hereunto set my Hand and caused the Seal of said Department to be affixed at Harrisburg, this twenty sixth day of July 1905

Loac R. Pearson
 Secretary of Internal Affairs.